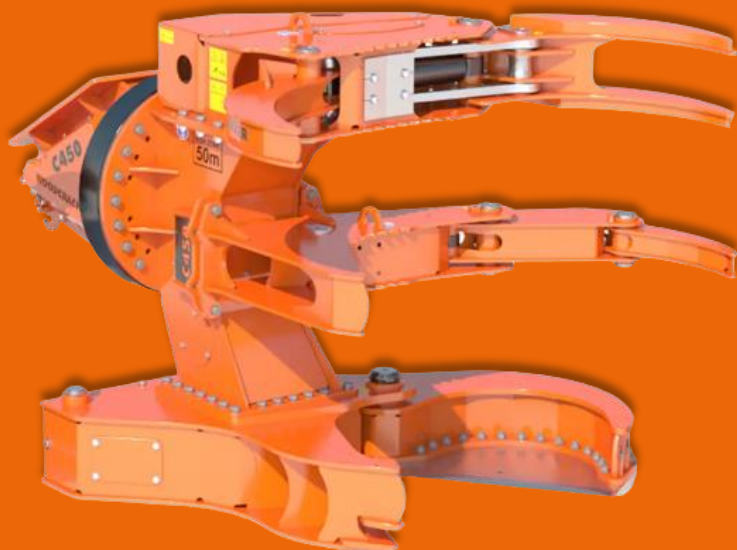


WOODCRACKER C450



Woodcracker C trimmer heads make it easy to safely harvest trees and shrubs. Suitable for crop harvesting, rough terrain, mountainous areas, logging, problematic or dangerous slopes, and humid environments.

Cutting diameter (softwood)	500 mm
Cutting diameter (Hardwood)	450 mm
Clamp opening	1600 mm
Opening the chisel	800 mm
Weight (basic - full equipment)	1760 kg – 2350 kg
Recommended hydraulic flow rate based on Woodcracker equipment	80-160 L/min.
Recommended Working Pressure	280 bar

KEY FEATURES

- Suitable for excavators, only 4 hydraulic connections needed
- Correct and simple connection
- Replaceable patented blade, high strength, easy to sharpen
- Additional conveyor workload due to shaft shears
- Support foot for safe storage and transport
- Robust and proven technology: low wear and low maintenance
- Cathodic tempering and powder coating
- Made of high-strength hardox steel

OPTIONS

- Autospeed: allows faster closing of the cutting mechanism in softwood
- Accumulator: used to work quickly on softwood and to bundle material. Can be removed easily to reduce weight on the machine
- 4 mounting options:
 - Rigid mounting: use of the bulldozer rotary unit
 - Swivel cylinder: 2 48º rotations, low maintenance
 - Tipper: continuous 360º rotation
 - Motorized tipper with Power Tiltator that provides more resistance at the same speed.